



PDS30

Power Drive Straddle Truck

SHORT TURNING RADIUS MAKES THE PDS AN EXCELLENT CHOICE FOR NARROW AISLES, TOOL ROOMS OR STREET LOADING APPLICATIONS



CAPACITY

1400kg at 600mm load center

BATTERY

Compartment: 670mm x 230mm x open. Anderson 175 Gray—A-11 Minimum battery weight 218kg

SPEED

ZAPI travel controller

TRAVEL

Variable from 0 to 5.5 km/h empty
Variable from 0 to 5 km/h loaded

LIFT

Up to 0.2 m/s empty.
Up to 0.1 m/s loaded—1400kg

LOWERING

Up to 0.1 m/s empty.
Up to 0.2 m/s loaded—1400kg

TIRES / WHEELS

DRIVE

230x75 polyurethane

DUAL LOAD

(2) 102x73 polyurethane

HYDRAULICS

Lift cylinder has hard chrome plated rods. Pump unit including motor, solenoid, gear pump, and pressure compensated lowering valve are mounted high in the power compartment for ease of service.

ELECTRICAL

24-Volt ZAPI AC O inverter, travel control with matching drive motor provide high performance throughout the entire speed range. Travel speed remains constant relative to throttle position regardless of load. Separately fused power control circuits, quick disconnect EPD power cut off, and hour meter / battery discharge indicator combination gauge complete the system. Power configurations and diagnostic features are displayed with a ZAPI handheld console.

BRAKES

Electromagnetic brake is mounted on the motor armature shaft multiplying the braking power through the transmission.

Brake is applied when the control arm is in the vertical or horizontal handle position. Travel speed is reduced when forks are above 305mm fork height. Neutral braking re-sists roll back on ramps.

CONTROLS

Travel, lift, and lower functions are located in the ergonomic operator handle. All operator controls are accessible without having to lift the hand from the handle.

Angle grips are designed to allow easy operation with either hand. Wrap around guard, reversing switch, thumb control, and horn are standard.

Top mounted tiller arm offers excellent operator comfort and minimum steering effort. Gas assisted spring gently returns handle to vertical position.

TRANSMISSION

Vertically mounted drive motor is direct mounted to gear housing. Oil bathed bevel gear drive train with tapered roller bearings transfers power to axle. State of the art optimized gear technology supplies advantages such as zero maintenance, low noise level, high efficiency and high performance.

FRAME AND MAST

Bolt-on high visibility mast, features I-beam construction, with lift cylinders positioned on the outer I-beam for best view through mast. Dual lift chains.

Straddle leg inside dimension (ID) can be set at 1070mm to 1270mm in 102mm increments.

Class two ITA fork carriage with 915mm tall load back rest. Forks are adjustable from 203mm ID to 762mm OD

BEARINGS

DRIVE WHEEL-Tapered roller bearings sealed in oil bath

LOAD WHEELS-Sealed ball bearings

ACCESSIBILITY

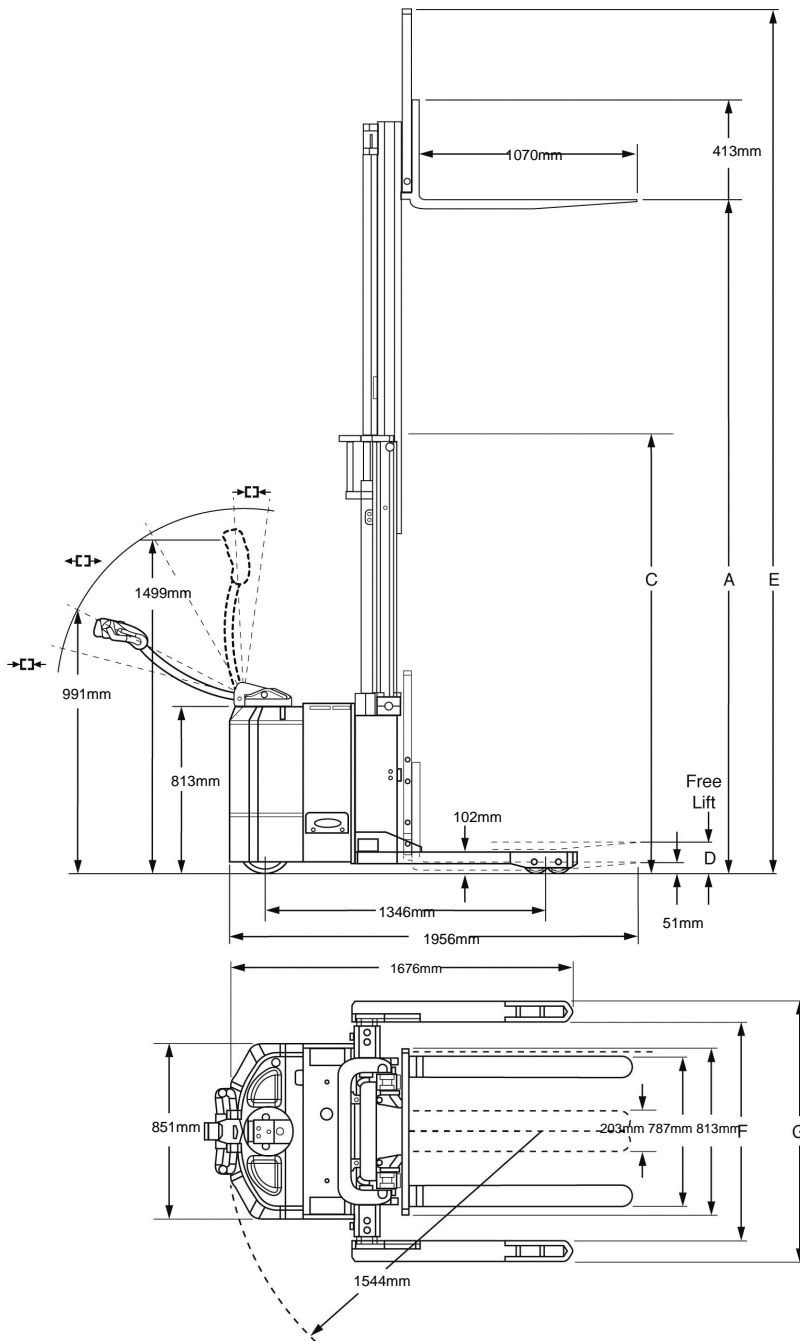
Removal of two piece power head cover exposes major components for inspection and maintenance

STANDARD EQUIPMENT

- Adjustable Straddle Legs
- Regenerative Braking
- Creep Speed Handle Control
- Gas Assist Spring Handle
- Low Battery Interrupt
- Hour Meter BDI Combo Gauge
- Key Switch

OPTIONAL EQUIPMENT

- 1220mm tall load backrest
- Cold conditioning
- Side-Shifting Fork Carriage
- Four Pack Power MF 224 AH / 5.4 kwh 240v plug-in charger/ 210AH Lithium battery 100A charger
- Industrial Battery 255 AH 5.9 kwh

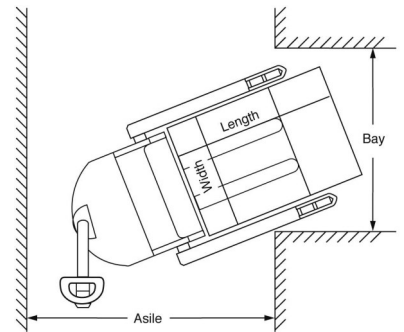


Aisle Guide

PDS30 - Right Angle Stacking

Load Width	Load Length		
	915mm	1016mm	1220mm
915mm	1717mm	1717mm	1717mm
1016mm	1755mm	1755mm	1755mm
1220mm	1864mm	1864mm	1864mm

For ease of use add 203mm to aisle dimension listed. If sideshift option is used add 51mm.



Aisle dimensions listed above assume the minimum bay width to be straddle OD plus 127mm (64mm on each either side of straddle leg). Straddle OD is the load width plus 254mm. Truck performance may vary due to application requirements and changes in model design.

Model #	Mast	Lift Height	Col Height	Free Lift	Ext Height w/LBR	² Adjustable Straddle Leg 102mm Increments		³ Weight Chassis Only
		A	C	D	E	ID	OD	

1400 Capacity @ 600mm Load Center ITA Class II Fork Carriage

PDS30-104	Two Stage	2642	1842	152	3556	1070to1270	1270to1473	926
PDS30-126	Two Stage	3200	2121	152	4115	1070to1270	1270to1473	985
PDS30-157	TriMast	3988	1829	1270	4902	1070to1270	1270to1472	1109
*PDS30-177	TriMast	4496	2032	1473	5410	1070to1270	1270to1473	1152

*Derates 454kg above 4115mm

² Minimum inside dimension (ID) 1070mm Outside dimension = inside dimension + 203mm

³ Estimated shipping weight without battery